

Tionól Réigiúnach an Deiscirt
Southern Regional Assembly



MATCH-UP

Interreg Europe



European Union
European Regional
Development Fund

Interreg Europe MATCH-UP Project - Multi-Modal Sustainable Transport

Rose Power, EU Projects Officer, Southern Regional Assembly
rpower@southernassembly.ie

MATCH-UP Project

Interreg Europe Priority - Low Carbon Economy

5 Partners

- University of Bologna – Italy
- Southern regional Assembly – Ireland
- County of Northeim – Germany
- Municipality of Funchal – Portugal
- Municipality of Timișoara – Romania

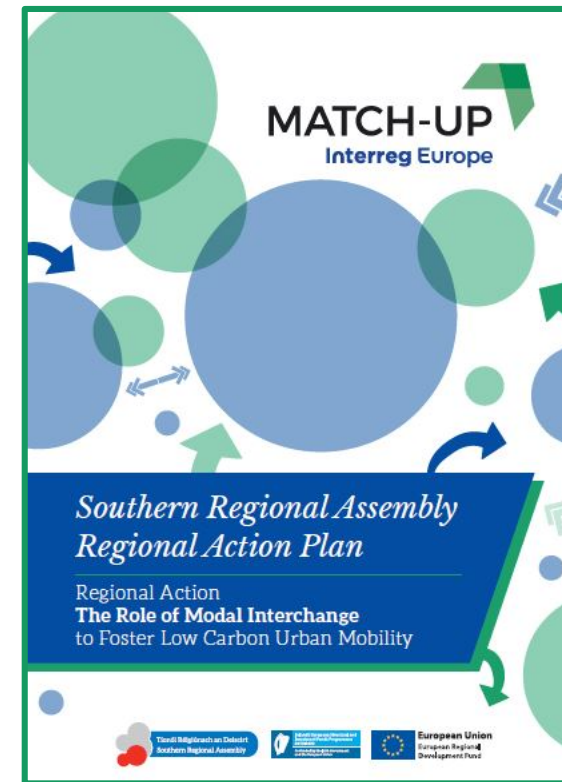
Objective – Foster low carbon multi modal sustainable transport to reduce air pollution, Co2 emissions and traffic congestion.

How – Through Interregional exchange of experience and good practices and the active support and participation of regional stakeholders.

Result – The development of a Regional Action Plan to improve policies in the Southern Region.

MATCH-UP
Interreg Europe

Tionól Réigiúnach an Deiscirt
Southern Regional Assembly



MATCH-UP Southern Region Exchange of Experience

LIMERICK SMARTER TRAVEL



Limerick Smarter Travel - Workplace Mobility...

05/02/2021

Workplace Mobility Management is an employer infrastructural and behaviour change programme to encourage employees to more active and sustainable commuting.

Location: Southern and Eastern, Ireland (Éire)

Project: MATCH-UP



RACE AGAINST ROB



RACE AGAINST ROB

23/03/2020

Fostering behavioural change through engaging the public of all ages in gaming activities to experience active travel, low carbon multimodal urban mobility.

Location: Southern and Eastern, Ireland (Éire)

Project: MATCH-UP



- **Limerick Smarter Travel Workplace Mobility Programme-** Featured at the Interreg Europe – Cycling Cities Webinar III – Getting More People to Cycle – February 2021 which was co hosted by The Southern Regional Assembly.
- **Race Against Rob** - Led to Cork City Council being the 1st Local Authority in Ireland to qualify for entry to the European Mobility Awards in 2019.

MATCH-UP Southern Region Exchange of Experience

The Green-Schools Travel National Programme



The Green-Schools Travel National Programme

26/02/2020

The Green-Schools Travel National Programme is a student led practice to foster sustainable travel by students to primary and secondary schools in Ireland

Location: Southern and Eastern, Ireland (Éire)

Project: MATCH-UP



CORK TRANSPORT MOBILITY FORUM



Cork Transport Mobility Forum

26/02/2020

Cork Transport Mobility Forum (Cork TMF) is a representative group of organisations who have a common interest in advocating/promoting...

Location: Southern and Eastern, Ireland (Éire)

Project: MATCH-UP



- **The Green Schools Travel National Programme** – Featured at the Interreg Europe Online Discussion on Traffic Calming Measures March 2020 and provided the inspiration for 3 Interregional Partners Regional Action Plans - the Municipality of Funchal, the County of Northeim and Municipality of Timișoara.
- **Cork Transport Mobility Forum** – Featured the MATCH-UP Project at the Mix your Mode Annual Conference in March 2020.

MATCH-UP Southern Region Exchange of Experience

LOCAL LINK RURAL TRANSPORT PROGRAMME



Local Link Rural Transport Programme

13/09/2019

Low carbon rural public transport bus service fostering social inclusion and multimodality by providing connectivity to urban public transport bus and rail...

Location: Southern and Eastern, Ireland (Éire)

Project: MATCH-UP



CYCLE & RIDE INFRASTRUCTURE



Cycle & Ride Infrastructure associated with Luas...

07/08/2019

Luas Cycle & Ride Sustainable Multi-Modal Interchange Improvements to reduce carbon emissions by delivering passenger-oriented solutions to meet passenger...

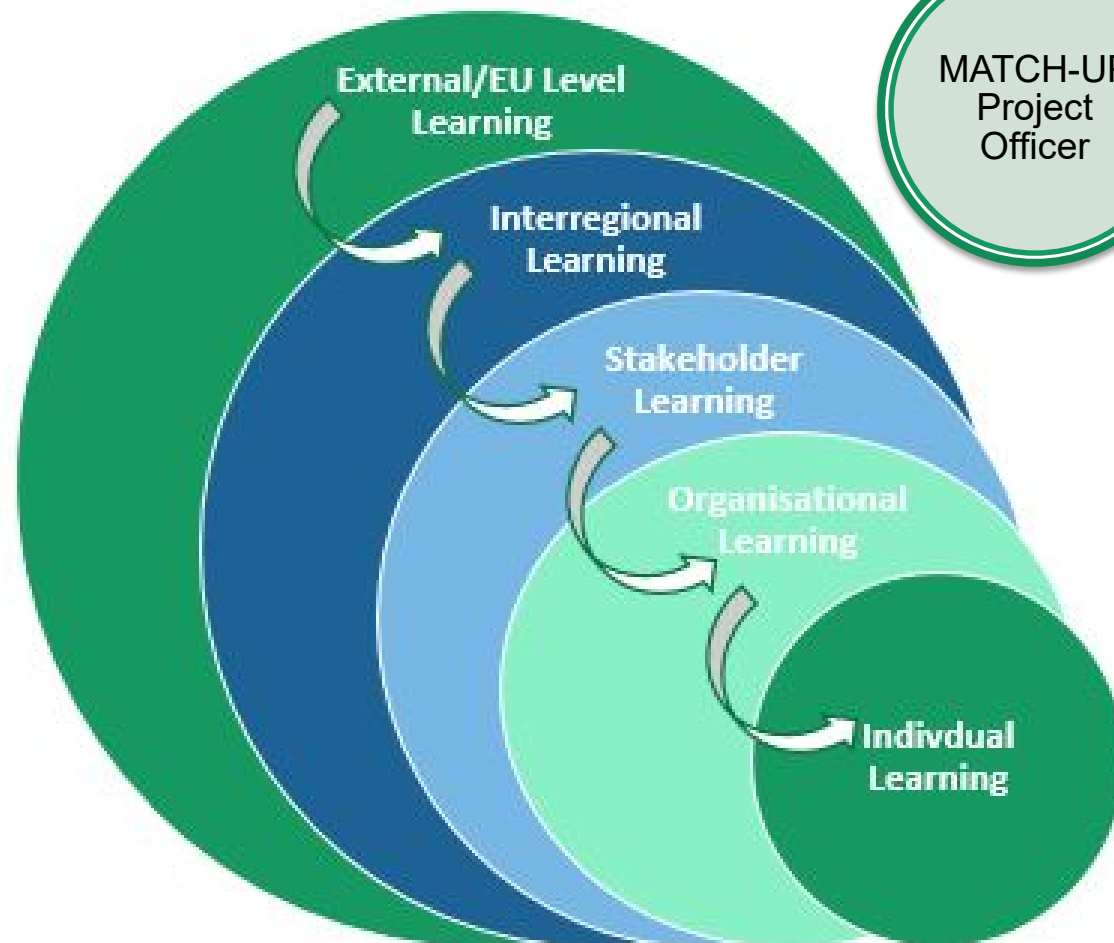
Location: Southern and Eastern, Ireland (Éire)

Project: MATCH-UP



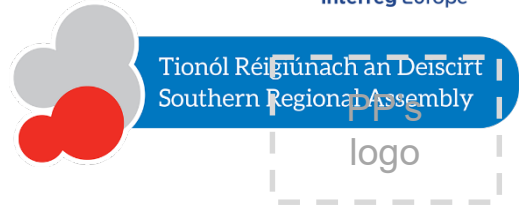
- **Local Link Rural Transport Programme** – Provided the inspiration for the County of Northmeath Regional Action Plan.
- **Cycle & Ride Infrastructure Associated with the Luas Light Rail** – Published in the Policy Learning Platform Policy Brief on Cycling Cities June 2020 and featured at the Interreg Europe Cycling Cities II – Infrastructure Developments Webinar January 2021 and provided the inspiration for the Municipality of Funchal Regional Action Plan.

Interregional Learning



A Survey has shown that 10 Stakeholders and 7 Staff of the Southern Regional Assembly **increased their professional competence** as a result of participating in the MATCH-UP project.

Southern Regional Assembly MATCH-UP - Regional Action Plan



The Action Plan aims to impact:

- X Investment for Growth and Jobs programme
- X Other regional development policy instrument

Policy Instruments Addressed:

Action 1: The Regional Spatial and Economic Strategy 2020 – Regional Policy

Objective: (RPO) 176: “10 Minute Town and City concept to attain sustainable compact settlements, whereby, a range of community facilities and services are accessible in short walking and cycle timeframes from homes or are accessible by high quality public transport services by connecting people to larger scaled settlements delivering these services.”

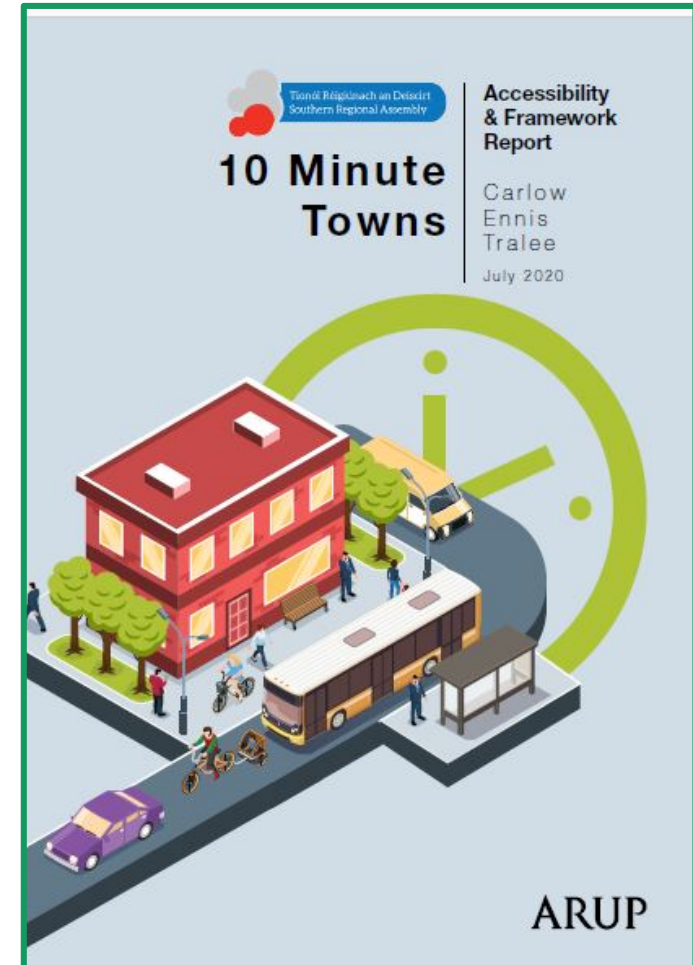
Action 2: The Southern & Eastern Regional Operational Programme 2014-2020 –

Priority 5: Sustainable Integrated Urban Development: Priority (6e): “Taking action to improve the urban environment, to revitalise cities, regenerate and decontaminate brownfield sites (including conversion areas), reduce air pollution and promote noise-reduction measures.”

Action 1 – The “10 Minute Town & City” Concept

Action 1: The Regional Spatial and Economic Strategy (RSES) 2020 – Regional Policy Objective: (RPO) 176: “10 Minute Town and City” concept

- Inspired by our Interregional learning we developed a **Framework and Methodology** for the implementation of a “**10 Minute Town & City**” concept in association with the owners of the policy instrument – The Southern Regional Assembly Regional Planning Team.
- This **implementation tool** will assist **Local Authorities** in assessing key towns to ensure the 10 Minute Town concept is incorporated into their **Local Transport Plans**.
- The Framework and Methodology was presented to the elected members of the Assembly in September 2020.
- We are currently **developing the implementation plan** for the roll out of the “10 Minute Town and City” Framework and Methodology to all Local Authorities in the Southern Region and will disseminate this at the International Transport Forum in May 2021.



10 Minute Town Framework

Data Collection: Street Network

(through OpenStreetMap and government data for location of services)

Data Collection: Community Facilities

(e.g. supermarkets, dentists, schools)

Building End-to-End Network

(establishment of where it is possible for pedestrians and cyclists to travel through representation of the street network)

Running Analysis

(establishment of walking and cycling catchment to determine which areas can be accessed from one or more facilities within 5-10 minutes)

Identification of Constraints and Opportunities

(e.g. potential new greenway, pedestrian connection)



The “10 Minute Town” concept is about **creating connected communities** –

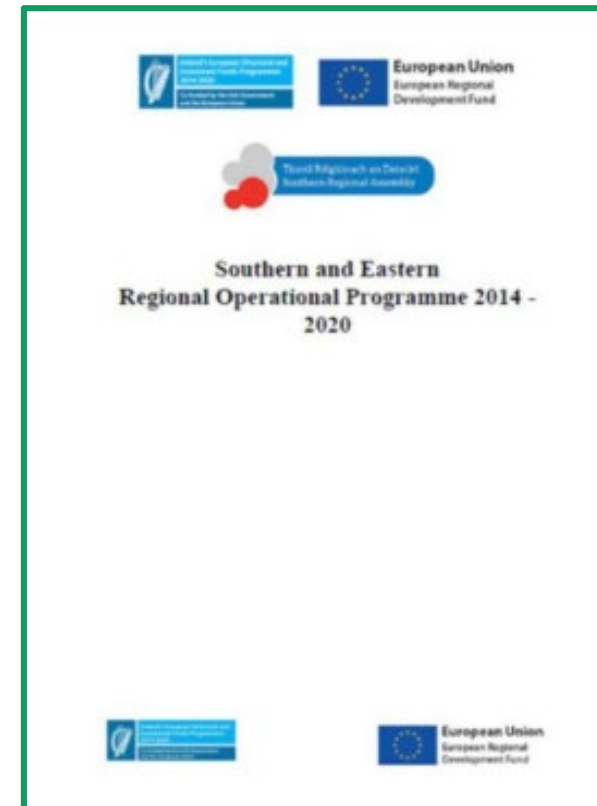
understanding how our neighbourhoods work and to map out how a more compact and permeable urban form can provide high quality and safe links to public transport, shops, healthcare, education, services, green spaces and to other neighbourhoods, which will reduce carbon emissions.

Action 2 – Sustainable Transport Framework



Action 2: the Southern & Eastern Regional Operational Programme (SEROP) 2014-2020 – Priority 5 (6e) - Sustainable Integrated Urban Development – Designated Urban Centres Grant Scheme (DUCGS)- Public Realm Improvements

- Create a **recommendation stage** for the implementation process of projects approved but not yet commenced under SEROP Priority 5 (6e) – Public Realm Improvements.
- Review these projects against a **Sustainable Transport Framework** inspired by Interregional learning from the MATCH-UP Project and developed with the assistance of ARUP Transport Consultants.
- This will facilitate where possible the incorporation of **recommendations** for low carbon urban mobility and modal interchange improvements into these projects.
- The **rationale** is to ensure every opportunity it taken to increase non-private car travel by improving access to public transport, improving cycle infrastructure, increasing pedestrianisation priority areas and improving modal interchange.



Action 2: Sustainable Transport Framework

Project Name:					
Means of transport affected (walking/cycling, public transport, rail transport, e-vehicles, etc.)					
LOW CARBON URBAN MOBILITY IMPROVEMENTS	DESCRIPTION	Yes/No	Current Score	Recommended Score	Recommendation
Safety and security	Urban design incorporating high levels of safety, especially in road crossing (lower speed limits near the stops, pedestrian crossings, intelligent crosswalks etc.) and security (video surveillance, etc.)				
Cycle Lanes	Increased cycle lanes and/or segregated cycle lanes and cycle parking				
Bike Sharing	Introduction and/or expansion of bike sharing schemes, bike sharing parking etc.				
MODAL INTERCHANGE IMPROVEMENTS	DESCRIPTION				
Close proximity of modes	Design solutions that reduce both actual and perceived interchange distance among means of transport				
Clear pedestrian routes	Presence of clear and direct routes for pedestrians connecting walking routes, public transport, facilities and destinations, as well as helping to select shortest-distance 'desire lines' within the interchange space				

Action 2: Sustainable Transport Framework

Low Carbon Parking facilities	Presence of cycle parking areas, cycle/e-car hiring spots near the interchange node				
Perception	Built and urban design solutions ensuring: direct sightlines among different parts of transport interchanges, Using the same architectural style to reinforce legibility, clear relationship with the urban realm				
Wayfinding	Ensure consistent, clear and comprehensible signage, to help passengers to navigate the interchange and connectivity to other transport modes and pedestrian areas (totem pole and entrance sign, platform signage, local area information, etc.)				
IMPROVED ACCESSIBILITY	DESCRIPTION				
Universal design	Interchange spaces designed for all passengers, particularly those with reduced mobility (presence of boarding equipment, ramps, assisted travel, escalators, staircase aids for bikes, wheelchairs, strollers, etc.)				
Pedestrian Areas	Increased wider pedestrian footpaths, pedestrian priority areas and phased pedestrianisation				
Accessible pedestrian routes	Ensure routes in the wider area are of the same accessibility standards as within the interchange facility				

- All of the **funding is already committed** under this priority so this is a means to create an improvement to those projects **not yet commenced**.
- The Sustainable Transport Framework was utilised for a **Dublin City Council (DCC) project with approved funding of €2.94 million as this had not commenced**.
- As this programming period is nearing the end the hope is that this improvement will also **influence the next programming period**.



Tionól Réigiúnach an Deiscirt
Southern Regional Assembly



MATCH-UP

Interreg Europe



European Union
European Regional
Development Fund

Thank you!