

MATCH-UP – 10 Minute Town Concept



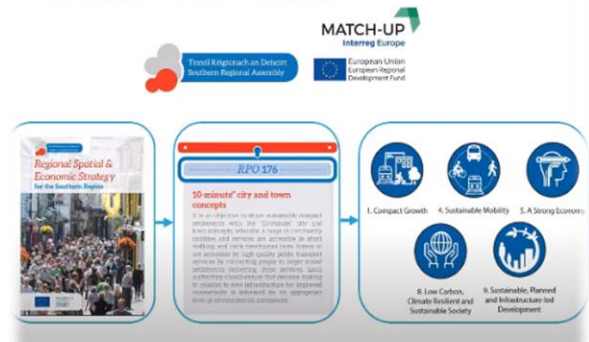
The MATCH-UP project aims to improve low carbon interchanges at local level to improve public transport by learning from our Interregional partners.

The [Southern Regional Assembly](#) is delighted to release the [MATCH-UP project 10 Minute Town Video](#) and the [MATCH-UP 10 Minute Town Framework full report](#) which was inspired by learnings from the Interregional partners of the [MATCH-UP Interreg Europe Project](#).

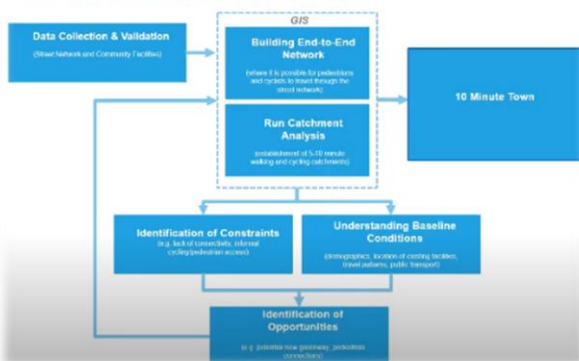
Following learnings from the MATCH-UP partners, we focused one of our policy improvements on the [Regional Spatial & Economic Strategy](#) – in particular Regional Policy Objective 176 - the 10 Minute Town Concept.

The 10 Minute Town Concept seeks to have all community facilities and services accessible within a 10 minute walk or cycle from homes or are accessible by public transport services connecting people to larger scaled settlements. We commissioned [ARUP](#) to assist in designing a framework and methodology to be used by local authorities as an implementation tool under the RSES for their Key Towns.

“10 Minute Town” Concept



10 Minute Town Framework



The framework and methodology were developed through an assessment of 3 Key Towns in the Southern Region – Carlow, Tralee and Ennis. The use of this implementation tool will assist all local authorities with fully integrating the “10 Minute Town Concept” into to future Local Development Plans and increase the use of sustainable transport and reduce carbon emissions in the Southern Region.

To find out more [CLICK HERE!](#)

MATCH-UP, a four and a half-year, 5-partners project was approved for a grant of €0.9m by the [Interreg Europe Programme](#) and commenced in July 2018 at a meeting in Bologna. The partnership consists of 4 European regions - Southern & Eastern Ireland, County of Northeim, Germany, Municipality of Funchal, Portugal and Timisoara Municipality, Romania who are working together

to share experience, solutions, and good practice to develop and deliver better public policy to reduce carbon emissions and support low carbon urban mobility in designated urban centres.

MATCH-UP is part-funded by the Interreg Europe Programme through the European Regional Development Fund and led by the University of Bologna in Italy.

For more about the MATCH-UP project go to - www.interregeurope.eu/match-up/

FOR FURTHER INFORMATION/INTERVIEW AND IMAGES, CONTACT:

Southern Regional Assembly, Waterford, Ireland
Ms. Rose Power, EU Projects Officer, rpower@southernassembly.ie

Project Co-ordinator
Match-up@unibo.it

MATCH-UP
Interreg Europe

 European Union
European Regional
Development Fund

