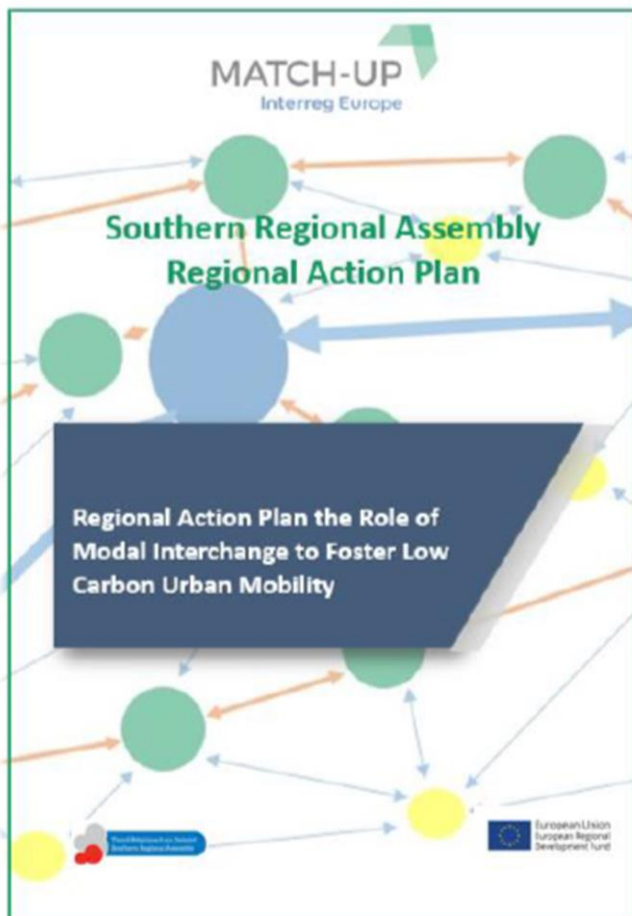


# MATCH-UP – Southern Regional Assembly – Regional Action Plan 10 Minute Town Concept



*The MATCH-UP project aims to improve low carbon interchanges at local level to improve public transport by learning from our Interregional partners.*

In Ireland the populations in our cities is growing and predicted to continue to grow, delivering sustainable transport and reducing carbon emissions are important dimensions in Ireland's climate change agenda.

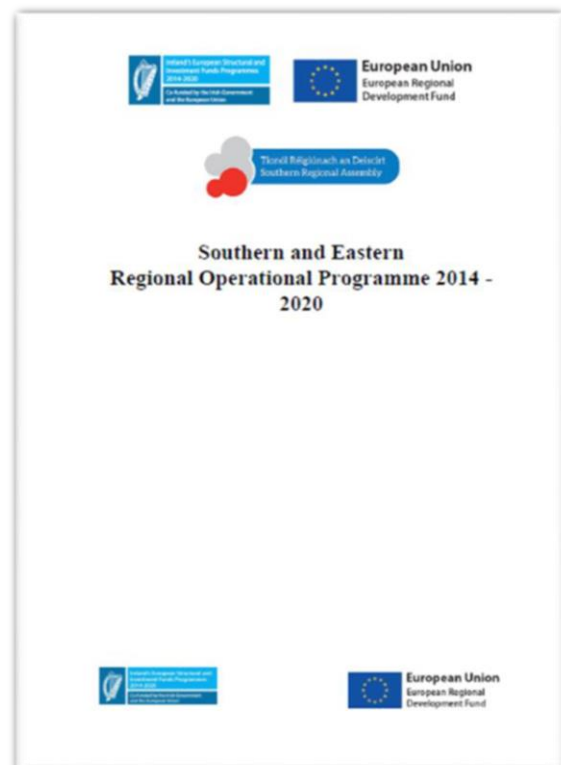
The [Southern Regional Assembly](#) is delighted to announce that our [MATCH-UP Interreg Europe Project](#)- Regional Action Plan – “The Role of Modal Interchange to Foster Low Carbon Urban Mobility” – has been validated by the Interreg Europe Technical Secretariat.

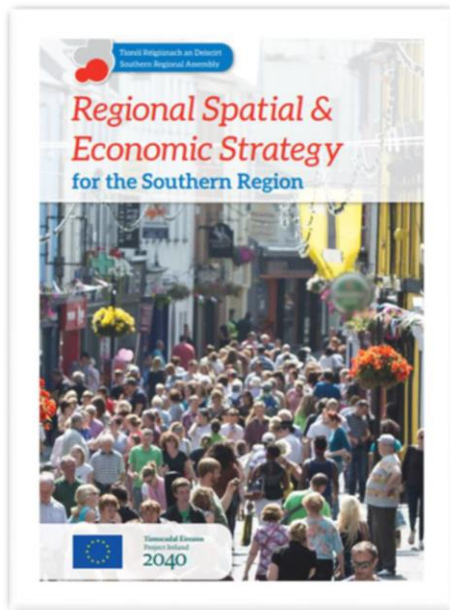
This action plan was inspired by learnings from all our Interregional partners in the MATCH-UP project and from Good Practices from the County of Norheim, Germany and the Municipality of Funchal, Portugal.

Our Action plan is seeking to improve 2 policy instruments:

1. [The Southern and Eastern Regional Operational Programme.](#)
2. [The Regional Spatial and Economic Strategy.](#)

**Action 1** – To design a framework based on the learnings from the MATCH-UP project to incorporate low carbon mobility and modal interchange improvements for Public Realm Improvement Projects funded under the Southern & Eastern Regional Operational Programme.





**Action 2** – Inspired by learnings from the MATCH-UP project to develop a framework and Methodology for the implementation of a 10 Minute Town Concept in the Southern Region.

***MATCH-UP, a four and a half-year, 5-partners project was approved for a grant of €0.9m by the Interreg Europe Programme and commenced in July 2018 at a meeting in Bologna. The partnership consists of 4 European regions - Southern & Eastern Ireland, County of Northeim, Germany, Municipality of Funchal, Portugal and Timisoara Municipality, Romania who are working together to share experience, solutions, and good practice to develop and deliver better public policy to reduce carbon emissions and support low carbon urban mobility in designated urban centres.***

MATCH-UP is part-funded by the Interreg Europe Programme through the European Regional Development Fund and led by the University of Bologna in Italy.

For more about the MATCH-UP project go to - [www.interregeurope.eu/match-up/](http://www.interregeurope.eu/match-up/)

**FOR FURTHER INFORMATION/INTERVIEW AND IMAGES, CONTACT:**

**Southern Regional Assembly, Waterford, Ireland**  
Ms. Rose Power, EU Projects Officer, [rpower@southernassembly.ie](mailto:rpower@southernassembly.ie)

**Project Co-ordinator**  
[Match-up@unibo.it](mailto:Match-up@unibo.it)

**MATCH-UP**  
Interreg Europe

 European Union  
European Regional  
Development Fund

